

Table of Contents

- 1) Recruiting Retail
- 2) Japanese Companies Growing
- 3) What's Happening?
- 4) Partners & Investors

Recent Happenings

Columbia Basin Tech students developed an oatmeal raisin cookie recipe that was a hit at a recent Korean trade show

Grant County Represented at Natural Foods Trade Show

Grant County marketing message delivered in-person to site selectors in Los Angeles

City of Mattawa moving forward on design and planning for its main street redevelopment

Luncheon on proposed carbon cap and trade legislation leads to EDC joining the Washington Climate Collaborative

Emily Braunwart with Grant EDC selected to travel to Japan as part of Sister City exchange

Export workshop and business financing workshop held to assist local companies that are growing into new markets and expanding operations and services

Recruiting Retail to Grant County

Representatives from Moses Lake, Quincy, Ephrata, and Soap Lake accompanied the Grant County Economic Development Council to Las Vegas for the third time to attend the annual Retail Real Estate Convention or RECon.

"We were very excited to represent and showcase how diverse our area is this year," said Emily Braunwart, Business Recruitment Manager for the EDC. "The members of our delegation met with retail companies, talked to developers, and learned best practices from other cities."

Team members were able to speak with companies such as: Sports Clips, Panda Express, Planet Fitness, Amazing Lash, Panera Bread, Bass Pro Shop and many more.

"Going to RECon is about building relationships and marketing our communities," said Braunwart. "Every year we're able to share how rapidly the Grant County economy is growing and why we're the next place these retailers should locate."



Contact Us:

Physical Address: Grant County EDC, 6594 Patton Blvd NE, Moses Lake, WA 98837

Billing Address: PO Box 2359, Moses Lake WA 98837

Phone: 509-764-6579 **Fax:** 509-762-5161

Email: jonathan@grantedc.com emily@grantedc.com allan.peterson@wsbdc.org





Japanese Companies Continue to Grow in Grant County

Moses Lake has a long history of Japanese culture and companies dating back to 1968 when Japan Airlines (JAL) began training pilots at the decommissioned Larson Air Force Base which had recently become the Grant County International Airport. Over the past 47 years JAL has continued to foster a friendship between Moses Lake and Japan and even helping to create the Moses Lake-Yonezawa Sister City relationship.

While JAL was the most visible Japanese company in Grant County – it's hard to miss the circling Boeing 747's – additional Japanese companies like Chemi-Con Materials, Takata, Moses Lake Industries and AstaReal also located facilities here.

Mitsubishi, the newest Japanese Company to make the move to Grant County, is partnering with AeroTEC to test the new Mitsubishi Regional Jet (MRJ). Mitsubishi plans to start bringing the MRJ to Grant County International Airport as soon as the jets are completed for a three-year testing and certification process.

Once Mitsubishi arrives, total employment in Grant County at Japanese owned companies will surpass 900. This represents close to 8% of total employment within the Moses Lake zip code where all five Japanese companies are located. If it was its own industry, Japanese companies would represent the 7th largest sector of the Moses Lake economy; just behind the hotel & restaurant sector and ahead of both the construction and wholesale trade sectors.

Later this year, in cooperation with the Port of Moses Lake, Emily Braunwart, Business Recruitment Manager for the Grant County EDC, will travel to Japan as part of Governor Inslee's trade delegation. Braunwart and the team from the Port of Moses Lake plan to visit with as many

of the local Japanese companies as time will permit. They will also be arranging meetings with Japanese companies that have expressed previous interest in a Grant County location.

"It will be great to visit the executives at these companies that employ so many people in Grant County," said Braunwart. "I want to be able to thank them for the positive influence they have had on Moses Lake and learn what we can do to help their businesses and other Japanese businesses continue to grow and add jobs here."

Prior to traveling as a member of the Governor's delegation, Braunwart will accompany three high school students to Japan for the 34th Moses Lake-Yonezawa sister city student exchange.

Braunwart and the students are currently involved in cultural classes taught by Ginny Hirai as preparation for their nine day stay in Yonezawa. While in Japan they will stay with host families and be immersed in the Japanese culture.

"It's exciting to be able to learn more about the Japanese culture and to experience the country in a less formal environment," said Braunwart.

"When I am participating in the delegation it will give me that much more background and familiarity so I can be more effective when meeting with companies."

The Moses Lake-Yonezawa sister city student exchange is currently collecting donations for a dinner auction, which will be held on June 18th at Lineage Logistics (Columbia Colstor) 2730 W Marina Dr. Moses Lake. Tickets are \$35 a person or \$250 for a table of eight. All proceeds help fund the exchange student's trip.

To register for the dinner auction contact 509-989-2287. To contribute to the sister city student exchange visit www.gofundme.com/mlsistercity2015.





What's Happening in Grant County?

Warden

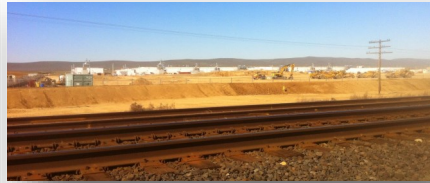


Main Street Hardware & Supply in Warden, WA is expanding its footprint. The hardware store carries tools, plumbing, paint, electrical, hardware, lawn & garden supplies, kitchen, bath, barbecues, lawn mowers, propane, patio furniture. They also carry ammo, knives, and a whole host of other items. If they don't have it, they can get it.



CHS Sun Basin is moving rapidly along with construction of its new fertilizer storage facility in Warden, WA. Located on 12 acres the facility will store 2.8 million gallons of liquid fertilizer, and 15,000 tons of dry fertilizer. Future plans at the site include offices and a maintenance building. The facility is on track to be operational in spring of 2016.

Quincy



Work is almost complete on the first phase of Microsoft's newest data center facility in Quincy, Washington. Microsoft already operates three other centers in Quincy and when the new phase is complete its Quincy operations will be one of the largest data center campuses in the world. The idea that data centers don't create very many jobs is just not true. Microsoft, along with six other data center companies, employ a full time work force of more than 600 people. Eighty percent of these jobs pay more than \$30.00 an hour which is roughly double the average wage in the region. This is in addition to the hundreds of temporary construction jobs created when the facilities are initially built.

Moses Lake



Work continues on AeroTEC's new hangar at the Grant County International Airport. Once completed, the hangar will be used by AeroTEC and Mitsubishi Aircraft to test the new Mitsubishi Regional Jet. This will bring approximately 150 pilots, engineers and aerospace technicians to Central Washington for about a three year period. Once the Mitsubishi Regional Jet has been certified the hangar will be used for testing and certification of other newly designed aircraft.



Carl's Jr. opened its first location in Grant County Washington in April with a location at the junction of Interstate 90 and State Highway 17. Sixty people have been employed to operate the fast food restaurant. The Grant County EDC and Moses Lake Chamber of Commerce helped facilitate meetings with Carl's Jr. at the International Council of Shopping Center's trade show in 2013 and 2014.



Partners & Investors

Founders Circle (\$75,000+ up)

ASPI Group
City of Moses Lake
City of Quincy
Grant County
Grant County PUD
Port of Moses Lake
Port of Quincy

Platinum Division (\$50,000-\$74,999)

Central Terminals LLC
Columbia Basin Herald
Microsoft Corporation
Samaritan Healthcare
Washington Trust Bank
Yahoo!

Gold Division (\$25,000-\$49,999)

Chemi-Con Materials
Confluence Health
Genie Industries
Hayden Homes
McKinstry Co., LLC

Silver Division (\$15,000-\$24,999)

AKZO Nobel
City of Ephrata
CliftonLarsonAllen LLP
Port of Ephrata
Port of Mattawa
REC Silicon

Bronze Division (\$2,500-\$14,999)

Accredited Appraisals
Agri/Com Appraisals
Alsted Real Estate
Argus Insurance
Aviation Technical Services
B & D Communications
Basic American Foods
Barrett Business Services, Inc.
Belle Enterprises Inc.
Big Bend Community College
Canfield & Associates
Cayuse Lake View Home Sites
Central Bonded Collectors
City of Electric City
City of George
City of Royal City
City of Soap Lake
City of Warden
Coldwell Banker Tomlinson Ranch & Home
Columbia Basin Development League
Columbia Basin Job Corp
Columbia Basin Railroad
Columbia Electrical Supply
Columbia Glass Inc.
Columbia Northwest Engineering
Consolidated Disposal Service, Inc.
Dano Law Firm, PS
Express Employment Professionals

Bronze Division Continued

Gary Mann Real Estate
General Dynamics—OTS
Guild Mortgage Company
Horizon Credit Union
Housing Authority of Grant County
Inland Cellular
Inland Tarp & Liner, LLC
ITC Services, Inc.
J & M Electric
JR Newhouse Co., PLLP
Key Bank
Lad Irrigation Co., Inc.
Lamb Weston, BSW
Landau Associates, Inc.
LC Farms, Inc.
Lenroc Company
Linage Logistics
Live Nation-Gorge Amphitheatre
Mardon Resort
Martin Morris Agency
Million Air Moses Lake
Moses Lake Chamber of Commerce
Moses Lake Community Health Center
Moses Lake School District
National Frozen Foods
Northland Communications
Pillar Rock Grill/Moses Lake Golf Club
Polhamus Heating & Air Conditioning
Port of Coulee City
Port of Hartline
Port of Royal Slope
Port of Warden
Quincy Farm Chemicals, Inc.
Quincy Foods
Rock Steel Structures
SGL Automotive Carbon Fibers
Skaug Brothers, Inc.
Skone & Connors
Tommer Constructions Co., Inc.
Total Employment & Management (TEAM)
Town of Coulee City
Trask Insurance Inc.
Umpqua Bank
Western Pacific Engineering
Western Polymer Corporation
Windermere K-2 Realty
Work Source Moses Lake Affiliate
Zip Truck Lines, Inc.

Friends of the EDC

Justin Ashley
Steve Ausere
David Bailey
Susie Barr
Terry Brewer
Jane Dickinson
Randy Dickinson

Friends of the EDC Continued

Dick Ealing
Jeff Foster
Frances Irwin
Rory Knapp
Denise Lefler
Fred Lischka
Don Long
Alan Lunderburg
Col. Clyde Owen
Dale Pomeroy
Jeff Railton
Sheldon Townsend
Pat Wold

Board of Directors

Juanita Richards, Horizon Credit Union, President

Tom Thompson, Samaritan Healthcare, Vice President

Char McDowell, TEAM, Secretary

LeAnne Parton, BBCC Foundation, Treasure

Gary Ash, National Frozen Foods, Past President

Chuck Berrie, Grant County PUD

Juliann Dodds, Umpqua Bank

Rick Heiberg, City of Coulee City

Kent Jones, Port of Moses Lake

Brian Kuest, Port of Quincy

Jon Lane, City of Moses Lake

Eric LaFontaine, Columbia Basin Herald

Pat Millard, Port of Warden

Alice Parker, Columbia Basin Development League

Irene Plenefisch, Microsoft

Dale Pomeroy, Pomeroy Farms

Marvin Price, LambWeston/BSW

Reed Raymond, Hayden Homes

Chris Romm, BBSI

Carolann Swartz, Grant County

Ray Towry, City of Ephrata